

SIGNS, DECALS, PACKAGING AND DISPLAYS

ON ANOTHER LEVEL



VersaUV LEC2 series printer/cutters offer an all-in-one printing, cutting, and embossing solution for sign and graphics providers—produce premium, head-turning products with added style and impact.



Print and cut premium labels and decals as well as rigid packaging prototypes, sleeves, and pouches.



Produce standout wall coverings, backlit fabric displays, window graphics, décor, and more.

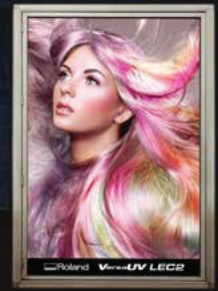


Highlight the color and details of your prints and packaging by adding Gloss ink textures and embossing.



From High End Displays to Premium Packaging, There's an LEC2 for You

Available in 33-inch and 64-inch machine sizes to fit your business and application needs, both VersaUV LEC2 series printer/cutter models offer a wide range of features to help you produce standout signs and graphics.



Highlights

- With precision dot placement and advanced head technology, print output withstands the closest scrutiny.
- Perf-cuts, creases, varnishes and adds special print effects onto a huge range of press substrates and materials.
- Apply primer to the print area with precision for extensive media compatibility
- Precise and powerful cutting force ensures crisp, clean lines around even the most complex shapes.
- A high-density ink mode increases the base-coat density of white ink on dark and transparent media for superior color results.
- Includes free VersaWorks 6 RIP software with features that include auto-generating cut lines and White and Gloss layers directly in the RIP.

Specifications

Model	LEC2-330	LEC2-640
Printing method	Piezo ink-jet	
Media	Width	182 to 762 mm (7.2 to 30 in.)
	Thickness	Max. 1.0 mm (39 mil) with liner for printing. Max. 0.4 mm (16mil) with liner and 0.22 mm (9 mil) without liner, for cutting
	Roll weight	Max. 55 lb. (25 kg)
Printing / cutting width	29 in. (Max. 736 mm)	Max. 63 in. (1600 mm)
Ink	Type	ECO-UV (EUUV5) 220 ml cartridge (White) ECO-UV (EUUV5) 500 ml cartridge (cyan, magenta, yellow, black, gloss, and primer)
	Colours	Six colors (cyan, magenta, yellow, black, white × 2, and gloss) and primer Six colors (cyan, magenta, yellow, black, white × 2, and gloss × 2) Four colors (cyan × 2, magenta × 2, yellow × 2, and black × 2)
Ink curing unit	Built-in UV-LED lamp	
Print resolution (dots per inch)	Max. 1440 dpi	
Cutting speed	0.4 to 11.8 in/s (10 to 300 mm/s)	
Blade force	30 to 500 gf	
Power requirements	AC 100 to 240 V ±10%, 3.0 A, 50/60 Hz	AC 100 to 240 V ±10%, 3.2 A, 50/60 Hz
Dimensions (with stand)	77 [W] × 31 [D] × 52 [H] in. [1945 (W) × 781 (D) × 1316 (H) mm]	111 [W] × 31 [D] × 52 [H] in. [2,819 (W) × 781 (D) × 1,316 (H) mm]
Weight (with stand)	275.6 lb (125 kg)	359.3 lb. (163 kg)

Specifications, designs and dimensions listed may be subject to change without notice. For detailed features visit www.rolandga.com/LEC2



Built to Build Your Business with Industry Best Warranty, Service and Support

Engineered to a higher standard, Roland provides the most dependable technology combined with superior support. Your VersaUV LEC2 series printer/cutter is also supplied with a Two-Year Trouble-Free Warranty* for added peace-of-mind.

** Registration within 60 days purchase and continuous exclusive use of Roland inks during the first two years of ownership are required to qualify for the free second year of limited warranty coverage

SCAN ME!
For detailed features and specifications,



or visit www.rolanddga.com/LEC2

Get social with us.



FOR MORE INFORMATION OR TO FIND A DEALER NEAR YOU, CALL 800-542-2307 OR VISIT WWW.ROLANDDGA.COM/LEC2
ROLAND DGA CORPORATION | 15363 BARRANCA PARKWAY | IRVINE, CALIFORNIA 92618-2216 | 800.542.2307 | 949.727.2100
RDGA-LEC2-03 January 2021

Roland® Built to build your business™

THIS PRODUCT IS BROUGHT TO YOU BY
NAZDAR
SOURCE ONE

VISIT US ONLINE
SourceOne.Nazdar.com

CALL US
888-578-5713

© 2022 Nazdar. All Rights Reserved.
Specifications subject to change without notice.